



RECESSED GDC320

CENTER LENSED GRID LUMINAIRE

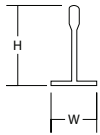


JOB	
TYPE	
DATE	

Commercial / Office / Classroom



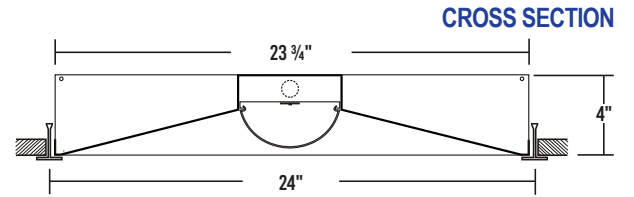
2' x 2'



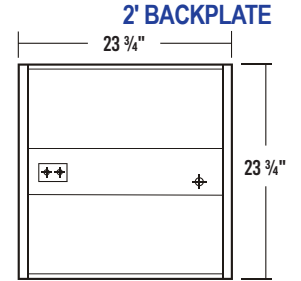
COMPATIBLE T-BAR GRIDS	
WIDTH	HEIGHT
15/16"	1 1/2"



2' x 4'

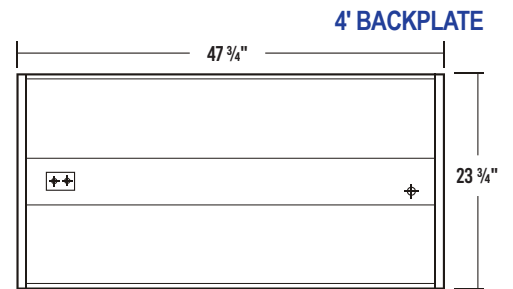


CROSS SECTION



2' BACKPLATE

- ⊕ ⊕ Access Plate
- ⊕ 7/8" KO



4' BACKPLATE

SPECIFICATIONS

Construction

- 22 gauge cold-rolled steel housing and reflector

Finish

- High reflectance low gloss matte white finish

Optical

- Frosted acrylic radial lens to maximize lumen output and reduce glare

Electrical

- High-efficiency drivers coupled with long-life LEDs
- Service life tested at 148,000 hours (L70)
- Universal voltage 120V through 277V (347V / 480V available)
- Power Factor (PF) ≥ 0.9
- Total Harmonic Distortion (THD) ≤ 20%

Listing

- UL USA and Canada listed / suitable for damp locations

Warranty

- 5-Year limited warranty standard. 10-Year limited warranty also available

APPLICATIONS

- Commercial, Classrooms, Offices

FEATURES

- 0-10V dimming driver standard (other dimming types available)
- Supports California Title 24 compliance

OPTIONS

- Additional lumen packages and color temperatures
- Sensors and controls
- Wireless control options
- Emergency battery pack
- Tunable white available (2700K-6500K)
- Customization available upon request



Los Angeles Lighting Mfg. Co.
 Contact Us
 T: 626-454-8300 10141 Olney Street
 F: 626-454-8399 El Monte, CA 91731
 www.lalighting.com Made in the USA



Due to continued product improvements and enhancements, Los Angeles Lighting Manufacturing Company reserves the right to alter specifications, dimensions, data, and/or materials without notice. Please visit our website to view the most current information.

© 2024 LOS ANGELES LIGHTING MANUFACTURING CO. ALL RIGHTS RESERVED

Revised: 07/31/24



ORDERING INFORMATION: Additional Options Available. Visit www.lalighting.com/resources for more information

EXAMPLE: GDC320-4-4L-BPL1.5-DRDM-UNV-1/840							
SERIES	NOMINAL LED LUMENS	NOMINAL LENGTH	ELECTRICAL	DRIVER	VOLTAGE	# OF LED ROWS	CRI / CCT
GDC320				DRDM	UNV	1	
GDC320 • LED Flanged Center Lensed Luminaire	2 - 2000 lm 3 - 3000 lm 4 - 4000 lm 6 - 6000 lm High Efficacy 2HE - 2000 lm 3HE - 3000 lm 4 - 4000 lm 6 - 6000 lm 8 - 8000 lm 10 - 10000 lm High Efficacy 4HE - 4000 lm 6HE - 6000 lm	2L • 2' x 2' 4L • 2' x 4'	BPL1.5 • 1500 lm emergency battery pack MS(xx) • Motion Sensor Infrared WLC(AWNR-WH) • Lutron Athena wireless node (RF) WLC(AWNS-WH) • Lutron Athena wireless node w/sensor *Additional Lutron options on page (4) *Leave blank if not specified	DRDM • 0-10V Dimming Driver	UNV • 120V-277V	1 • One LED Row	827 • 80+CRI / 2700K 830 • 80+CRI / 3000K 835 • 80+CRI / 3500K 840 • 80+CRI / 4000K 850 • 80+CRI / 5000K 865 • 80+CRI / 6500K 8TW • 80+CRI Tunable White 2700K-6500K 90CRI Also available Contact customer service for additional CRI/CCT packages.
Standard options for GDC320 shown above. For additional options, including lumen packages, controls, lenses, switches, finishes, and more, visit www.lalighting.com/resources or contact customer service.							

SYSTEM DATA: Additional Lumen Packages Available. Contact Customer Service for More Information

Normal Temp	2' - LED LUMEN PACKAGE	PRODUCT CODE	DELIVERED LUMENS	SYSTEM WATTS	LUMINAIRE EFFICACY	AMBIENT TEMP.	FLUORESCENT EQUIVALENT	IES FILES
	2000 Lumens (Nominal)	GDC320-2-2L-DRDM-UNV-1/840	1834	14.1	129.9 lm/W	-20°C / 35°C (-4°F / 95°F)	1-F24T5HO, 2-F17T8	LA-T3722
	3000 Lumens (Nominal)	GDC320-3-2L-DRDM-UNV-1/840	2809	22.1	127.0 lm/W	-20°C / 35°C (-4°F / 95°F)	3-F17T8	*
	4000 Lumens (Nominal)	GDC320-4-2L-DRDM-UNV-1/840	3717	27.3	136.3 lm/W	-20°C / 35°C (-4°F / 95°F)	2-F24T5HO, 4-F17T8	LA-T3721
	6000 Lumens (Nominal)	GDC320-6-2L-DRDM-UNV-1/840	5402	39.4	137.1 lm/W	-20°C / 35°C (-4°F / 95°F)	3-F24T5HO, 6-F17T8	*
Normal Temp High Efficacy	2' - LED LUMEN PACKAGE	PRODUCT CODE	DELIVERED LUMENS	SYSTEM WATTS	LUMINAIRE EFFICACY	AMBIENT TEMP.	FLUORESCENT EQUIVALENT	IES FILES
	2000 Lumens (Nominal)	GDC320-2HE-2L-DRDM-UNV-1/840	1796	12.4	145.1 lm/W	-20°C / 35°C (-4°F / 95°F)	1-F24T5HO, 2-F17T8	*
	3000 Lumens (Nominal)	GDC320-3HE-2L-DRDM-UNV-1/840	2713	18.7	145.2 lm/W	-20°C / 35°C (-4°F / 95°F)	3-F17T8	*

NOTE:
System data as of 7/30/24.
Subject to change without notice.

System data is based on 120V input voltage. Actual performance may differ as a result of end-user environment and application. This fixture has been tested and listed in accordance with UL Standards. L.A. Lighting certifies that it will operate safely when installed properly, and within an ambient temperature range noted in the system data table.

Additional lumen packages and color temperatures available.



Los Angeles Lighting Mfg. Co.
 Contact Us
 T: 626-454-8300
 F: 626-454-8399
 www.lalighting.com
 10141 Olney Street
 El Monte, CA 91731
 Made in the USA



Due to continued product improvements and enhancements, Los Angeles Lighting Manufacturing Company reserves the right to alter specifications, dimensions, data, and/or materials without notice. Please visit our website to view the most current information.

© 2024 LOS ANGELES LIGHTING MANUFACTURING CO. ALL RIGHTS RESERVED

Revised: 07/31/24



SYSTEM DATA: Additional Lumen Packages Available. Contact Customer Service for More Information

Normal Temp	4' - LED LUMEN PACKAGE	PRODUCT CODE	DELIVERED LUMENS	SYSTEM WATTS	LUMINAIRE EFFICACY	AMBIENT TEMP.	FLUORESCENT EQUIVALENT	IES FILES
	4000 Lumens (Nominal)	GDC320-4-4L-DRDM-UNV-1/840	3695	26.7	138.4 lm/W	-20°C / 35°C (-4°F / 95°F)	1-F54T5HO, 2-F32T8	LA-T3686
	6000 Lumens (Nominal)	GDC320-6-4L-DRDM-UNV-1/840	5754	43.7	131.8 lm/W	-20°C / 35°C (-4°F / 95°F)	3-F32T8	LA-T3685
	8000 Lumens (Nominal)	GDC320-8-4L-DRDM-UNV-1/840	7428	51.1	145.3 lm/W	-20°C / 35°C (-4°F / 95°F)	2-F54T5HO, 4-F32T8	LA-T3734
	10000 Lumens (Nominal)	GDC320-10-4L-DRDM-UNV-1/840	9162	61.5	149.0 lm/W	-20°C / 35°C (-4°F / 95°F)	5-F32T8	*

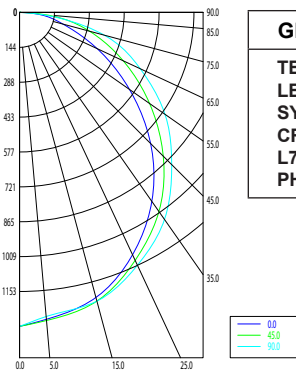
Normal Temp High Efficacy	4' - LED LUMEN PACKAGE	PRODUCT CODE	DELIVERED LUMENS	SYSTEM WATTS	LUMINAIRE EFFICACY	AMBIENT TEMP.	FLUORESCENT EQUIVALENT	IES FILES
	4000 Lumens (Nominal)	GDC320-4HE-4L-DRDM-UNV-1/840	3617	23.5	154.2 lm/W	-20°C / 35°C (-4°F / 95°F)	1-F54T5HO, 2-F32T8	*
	6000 Lumens (Nominal)	GDC320-6HE-4L-DRDM-UNV-1/840	5465	36.4	150.2 lm/W	-20°C / 35°C (-4°F / 95°F)	3-F32T8	*

NOTE:
System data as of 7/30/24.
Subject to change without notice.

System data is based on 120V input voltage. Actual performance may differ as a result of end-user environment and application. This fixture has been tested and listed in accordance with UL Standards, L.A. Lighting certifies that it will operate safely when installed properly, and within an ambient temperature range noted in the system data table.

Additional lumen packages and color temperatures available.

PHOTOMETRIC DATA



GDC320-4-4L-DRDM-UNV-1/840

TEST NO. = LA-T3686
LED ROWS = 1
SYSTEM WATTS (W) = 26.7
CRI ≥ 80
L70(Hrs.) ≥ 50,000
PHOTOMETRY TYPE = C

ZONAL LUMEN SUMMARY			
DEGREES	LUMENS	% LAMP	% FIXTURE
0-30	994	24.3	26.9
0-40	1623	39.7	43.9
0-60	2853	69.8	77.2
0-90	3695	90.4	100.0
90-120	1	0	0
90-150	1	0	0
90-180	1	0	0
0-180	3695	90.4	100.0

SPACING CRITERION	
ALONG	ACROSS
1.18	1.26

Luminaire Output = 3695 lumens
 Luminaire Efficacy = 138.4 lm/W
 Luminaire Efficiency = 90.44%



Los Angeles Lighting Mfg. Co.
 Contact Us
 T: 626-454-8300
 F: 626-454-8399
 www.lalighting.com
 10141 Olney Street
 El Monte, CA 91731
 Made in the USA



Due to continued product improvements and enhancements, Los Angeles Lighting Manufacturing Company reserves the right to alter specifications, dimensions, data, and/or materials without notice. Please visit our website to view the most current information.

© 2024 LOS ANGELES LIGHTING MANUFACTURING CO. ALL RIGHTS RESERVED

Revised: 07/31/24





WIRELESS CONTROLS

Vive Systems

Vive PowPak Wireless Fixture Controls

WLC(FCJS0) - PowPak Wireless Fixture Control

- RF only. For use with 0-10V drivers.
- One fixture control per luminaire, typically end-mounted via 1/2" KO.

WLC(FCJS0S) - PowPak Wireless Fixture Control with Sensor

- RF with daylight/occupancy sensing. For use with 0-10V drivers.
- One fixture control per luminaire, typically end-mounted via 1/2" KO.
- Sensor must be installed separately.

WLC(FCJSE) - PowPak EcoSystem Wireless Fixture Control

- RF only. For use with Lutron EcoSystem drivers.
- One fixture control per luminaire, typically end-mounted via 1/2" KO.

WLC(FCJSES) - PowPak EcoSystem Wireless Fixture Control with Sensor

- RF with daylight/occupancy sensing. For use with Lutron EcoSystem drivers.
- One fixture control per luminaire, typically end-mounted via 1/2" KO.
- Sensor must be installed separately.

Vive PowPak Sensors

*FC-SENSOR - PowPak Occupancy/Daylight Sensor

- For luminaires with existing PowPak Wireless Fixture Controls.
- Turns luminaire ON/OFF based on motion. Adjusts lumen output in response to ambient light.
- Recommended mounting height: 8-12ft

*FC-VSENSOR - PowPak Vacancy/Daylight Sensor

- For luminaires with existing PowPak Wireless Fixture Controls.
- Turns luminaire OFF when area is vacant. Adjusts lumen output in response to ambient light.
- Recommended mounting height: 8-12ft.

Vive Integral Fixture Controls

WLC(VRF) - Vive Integral Wireless Fixture Control

- RF only. Requires controls-ready driver.
- One fixture control per luminaire, mounting location varies by luminaire.

WLC(VDO) - Vive Integral Wireless Fixture Control

- RF, plus daylight/occupancy sensing. Requires controls-ready driver.
- One fixture control per luminaire, mounting location varies by luminaire.
- Turns luminaire ON/OFF based on motion. Adjusts lumen output in response to ambient light.
- Coverage area at 9ft mounting height: Up to 300 sq.ft for major motions; 150 sq.ft. for minor motions.

How to Order

Pre-installed components are ordered by adding the part number to the luminaire:

GHL320-4-4L-FSW-PA- [WLC\(FCJS0\)](#) -DRDM-UNV-2/840

Components marked with * are ordered separately

Athena Wireless Nodes

Requires Athena-compatible drivers and Clear Connect Gateway - Type X

WLC(AWNR-WH) - Wireless Node (White)

- RF communication node. One per luminaire, integrally mounted.

WLC(AWNS-WH) - Wireless Node (White) with Sensor

- RF, plus daylight/occupancy sensing. One per luminaire, integrally mounted.

WLC(AWNR-BL) - Wireless Node (Black)

RF communication node. One per luminaire, integrally mounted.

WLC(AWNS-BL) - Wireless Node (Black) with Sensor

- RF, plus daylight/occupancy sensing. One per luminaire, integrally mounted.



WLC(AWNR-WH)
Athena Wireless Node



WLC(FCJS0)
PowPak Wireless Fixture Control



FC-SENSOR
PowPak Occupancy/Daylight Sensor



WLC(VDO)
Vive Integral Wireless Fixture Control

Lutron, Vive, Athena, PowPak, EcoSystem, Pico, and Clear Connect are trademarks or registered trademarks of Lutron Electronics Co., Inc., in the U.S. and/or other countries.



Los Angeles Lighting Mfg. Co.

Contact Us
T: 626-454-8300 10141 Olney Street
F: 626-454-8399 El Monte, CA 91731
www.lalighting.com Made in the USA



Due to continued product improvements and enhancements, Los Angeles Lighting Manufacturing Company reserves the right to alter specifications, dimensions, data, and/or materials without notice. Please visit our website to view the most current information.

© 2024 LOS ANGELES LIGHTING MANUFACTURING CO. ALL RIGHTS RESERVED

Revised: 07/31/24

